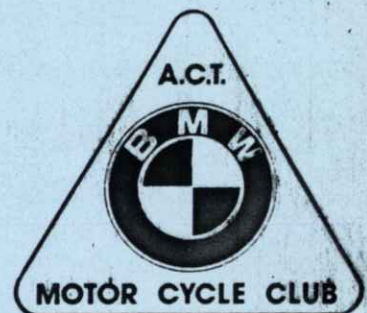


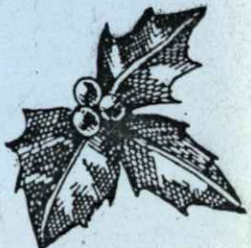
MONTHLY
JOURNAL

OF THE



P.O. BOX 1042,
WODEN
A.C.T. 2606

MERRY CHRISTMAS



COMMITTEE

PRESIDENT :- WERNER STROTMANN PH. 864057 (H)
 VICE PRESIDENT :- MIKE HOUSTON PH. 889609 (H)
 SECRETARY :- MARK COGLAN PH. 318059 (H) 684871 (W)
 TREASURER :- URSULA STROTMANN PH. 864057 (H)
 TOURING SECRETARY :- BOB RUMSEY PH. 919329 (H) 733777 (W)
 SOCIAL SECRETARY :- FRANK MILLWOOD PH. 957403 (H) 633799 (W)
 EDITOR :- JENNI COLE PH. 816559 (H) 887508 (W)

LIBRARIAN :- FRANK MILLWOOD
TOOLS OFFICER :- FRANK MILLWOOD

CLUB ACTIVITIES

GENERAL MEETINGS SECOND MONDAY OF THE MONTH FROM 7.45pm.
 ROYALS RUGBY FOOTBALL CLUB, LIARDET ST, WESTON.
 CLUB RUNS FIRST WEEKEND OF THE MONTH (SATURDAY OR SUNDAY)
 MEET AT WESTON MOTORCYCLES. SEE "WHAT'S ON" PAGE.
 SOCIAL EVENTS AS ARRANGED. WATCH "MINUTES" & "WHAT'S ON" PAGES.
 KOSCIUSKO RALLY FIRST WEEKEND IN OCTOBER.
 KOSCIUSKO NATIONAL PARK, GEEHI HUT CAMPSITE.

MEMBERSHIP FEES SINGLE - \$10 JOINT - \$12 ASSOCIATE - \$10 / \$12

DISCOUNTS

WESTON MOTORCYCLES
49 BRIERLEY STREET,
WESTON. PH. 888747

GENGE MOTORCYCLES
7 LONSDALE STREET,
BRADDON. PH. 497923

JOE'S MOTORCYCLE WRECKERS
UNIT 10, 3 WILUNA STREET,
FYSHWICK. PH. 806703

PADDY PALLIN
46 NORTHBOURNE AVE,
CIVIC. PH. 478949
(Available on purchases
totalling over \$300)

PLEASE SHOW YOUR MEMBERSHIP CARD



- JAN 13 GENERAL MEETING - Royals Rugby Football Club, Weston, 7.45pm.
- JAN 19 Roadside Meet Social Run, meet at 9.30am at Phillip Motor Registry Carpark. BYO Grog & Meat (Picnic if fire bans are on). Contact Social Secretary for more details.
- JAN 25 - 27 Karuah River Rally, near Dungog, NSW.
Clubman Rally, Jingellic, NSW.
Canberra Vintage, Veteran & Classic Rally, ACT.
- FEB 2 CLUB RUN to Charlottes Pass (Mt Kosciusko) meet at 9.00am at Phillip Motor Registry Carpark.
- FEB 10 GENERAL MEETING - Royals Rugby Football Club, Weston, 7.45pm.
- FEB 15 - 16 Swamp Rally near Ryleston, NSW.
- FEB 16 Afternoon tea Social Run, Cuppacumbalong or Lanyon, details to be advised next month.



SOCIAL RUN

Roadside Meet - Sunday
BYO grog + meat 19th
 (bring a picnic if January
Meet at 9.30 am
Phillip Motor Registry
Carpark

fire bans are on!

contact FRANK for details

A MAN IS THREE PEOPLE, WHAT HE IS, WHAT HE THINKS HE IS,
AND WHAT OTHERS THINK HE IS.

MINUTES OF GENERAL MEETING

9 DECEMBER 1985

OPENED : 8.15pm
VENUE : ROYALS RUGBY FOOTBALL CLUB, WESTON.
APOLOGIES: 3 (Thomas Burns, Stuart Sunderland, Peter Oliver)
PRESENT : 21 MEMBERS
Nil VISITORS

NEW MEMBERS: Richard Corboy

MINUTES of previous General Meeting accepted. Moved by Lesli Cameron
Seconded by Liz Coghlan

CORRESPONDENCE

OUT : Nil
IN : Club Magazines - QLD, SA, WA (all Nov); Wedding thank you from Graeme & Lesli Cameron; BMW VIC Hall's Gap Rally in April.

PAST EVENTS REPORTS :

Cowra day run by Philip Chown
CDDC Economy Run by Mike Houston

BUSINESS :

- . Christmas Party numbers finalised for 14 December - 21 attending.
- . Weston Motor Cycles moving end Jan '86 to Dundas Court, Phillip.
- . Purchased IBM golfball typewriter for \$120.
- . Nowra - NSW - BMW Dealer open day report by Warren Gilchrist.
- . Articles - anything - requested for your Club Journal.
- . Oil filters bulk buy investigation by Graeme Cameron - box of 48.
- . CT18 Truck Wash bulk buy shares organised by Fran Gilchrist - 5kg container.
- . "Run" for January, Roadside Meet 19 January (See Social Secretary's article)
- . February Sunday 2nd Run to Charlotte's Pass (please note date).

NEXT MEETING : 13 January 1986
NEXT RUN : (See What's On page)
Closed : 9.00pm
Current membership is 74.

MARK C.

10/ 12/ 85

- 3 -

THE R75/5

The R75/5 was made from 1969 'til 1973 of which 38,370 examples were built. It replaced the R69S as the top of the line model in the BMW range at the time.

The motor, a type 246 was a flat twin four stroke with overhead valves. It had a capacity of 745 cm³ with a bore and stroke of 82 & 70.6 mm, and a compression ratio of 9.0 to 1 and gave out 50 bhp at 6,200 rpm. The R75/5 was fitted with two 32 mm Bing C.V. carburettors. There was a single dry plate clutch which fed power straight to a type 246 constant mesh four speed gearbox with sliding dog clutches and gear ratio of 3.89 to 1 for 1st, 2.57 to 1 for 2nd, 1.87 to 1 for 3rd and 1.50 to 1 for 4th. The drive shaft was kept in its own oil bath in the right hand swing-arm delivering power to the rear drive by a couple of spiral bevel gears in an oil bath, with a ratio of 2.91 to 1 with an optional ratio of 3.21 to 1. The frame was a type 246, an all steel double cradle with oval section tubing, large diameter top tube and smaller cradle members with the rear subframe bolted to the main cradle section.

Front forks were telescopic with internal helical spring and hydraulic, double-acting damping. The rear end was a swing-arm with multi-rate adjustable helical springs and hydraulic damping. The front brake was a 200 mm twin leading shoe with a 19 inch wheel, the rear a 200 mm single leading shoe brake on an 18 inch wheel.

Ignition was by battery/ coil. A 180 watt alternator mounted on the front of the crankshaft helped charge the 12 volt battery.

The R75/5 was 2100 mm long, a width of 740 mm, a height of 850 mm and weighed in at 190 kgs unladen. Fuel tank capacity was 22 litres with a fuel consumption of 17.8 km/l, it had a range of 380 kms. The bike had a top speed of 174 km/h and was able to get from 0 to 100 km/h in 6.8 seconds.

The R75/5 was new from stem to stern. The long travel front forks perfectly balanced the new rear shock absorbers to provide that soft, comfortable springing and excellent handling. Except for detail differences, the gearbox and clutch were similar to earlier models but the engine was radically different. The new engine employed a one-piece crank with split shell slipper big ends and plain metal main bearings, a design feature long used on BMW cars. An automotive type timing chain was used with a spring loaded slipper tensioner to take up chain wear. In the interests of increased cornering clearance the camshaft was relocated beneath the crankshaft assembly allowing the cylinder barrels to be mounted higher in the frame. Large alloy castings contained air filter and electric components including the starter motor. That basic design remains very much the same today.

In 1972 the bike came fitted with a 17 litre fuel tank that had chrome plated panels on each side and similarly finished small side panels to hide the battery, although the models imported into Australia mostly had the larger tank with out the chrome plated panels. The rear wheel rim went up to a WM3. A revised dual seat was fitted with a handrail that ran round the back. Internally, the flywheel weight went down, the ratio in the rear drive was lowered and the rear suspension units with stiffer damping.

In 1973 the bike's wheel base was increased 50 mm by the neat play of inserting a sleeve of this length in the swing arm assembly on the drive side. Naturally a longer drive shaft was fitted and a longer dual seat was also adopted, along with a re-shaped rear mud-guard.

.....continued page 5

CLASSIFIEDS

FOR SALE

MULTI-VARIO TANK BAG,
 SUIT R SERIES BMW,
 EXCELLENT COND.
 \$ 100
 GRAEME CAMERON 887044 (H)

FULL FAIRING FOR R SERIES,
 SILVER GREY SHADING TO BLACK,
 WITH NEW MIRRORS & HEADLIGHT
 \$ 250 NEVER USED
 WARREN GILCHRIST 881462 (H)

CRASH BARS SUIT BMW /6 /7
 UNSCRATCHED
 \$ 35
 CHRIS FULKER 310114 (H)

CLUB T-SHIRTS ORDERS TAKEN
 \$ 7
 BOB RUMSEY 919329 (H)

'Melbourne Herald' 30/9/85

Motorbikes reaching a century

BONN, Sun., Reuter — A wooden bicycle with a one-cylinder engine strapped under its saddle rattled through a village in southwest Germany 100 years ago this month.

It was the world's first motorcycle.

But a century after engineer Gottlieb Daimler took out a patent on "a vehicle with a gas or petrol engine", the motorcycle industry in the country which invented the machine is just a shadow of its former self.

West German motorbikes have long lost their predominance even at home, where the Japanese control about 80 per cent of the market.

"The birthday boy is a little under the weather," quipped a speaker at the opening of an exhibition commemorating the motorcycle's centenary in Munich.

In 1955 there were still 30 prospering motorcycle companies in West Germany, now only two major manufacturers: Bayerische Motoren Werke (BMW) and Hercules. The latter has been forced to cut production drastically.

Zuendapp, one of the industry's flagships, went bust last year. Its production lines were bought by Peking, which took them to China.

The only West German firm in good health is BMW, which has traditionally specialised in heavy machines. The Bavarian company has just shown its self-confidence by launching a new model on the motorbike's centenary.

The K-75, equipped with three cylinders, is a smaller version of the K-100, launched in 1983 as a successor to the famous "Boxer" which had been in production since 1927.

Two major factors contributed to a decline of the industry in the 1950s — a shift to cars and competition from Honda, Suzuki, Yamaha and Kawasaki, the four big Japanese makers.

ANSWERS FROM LAST MONTH'S QUESTIONS ON ORDER OF PRODUCTION

The order the models should be listed is as follows :-

The R32 was made in 1923 and was BMW's first bike. Then came the R47 made in 1927, R57 in 1928, R16 in 1929, R2 in 1931, R12 in 1935, R5 in 1936, R20 & R35 were both made in 1937, the R51, R66 & R71 were all made in 1938, R75 in 1941, the R26 & R60 both came out in 1955, R90/6 in 1973, R45 in 1978, R100RT in 1979, R80GS in 1981 and the R80RT in 1983.

FRANK.

continued The R75/5

The R75/5 was used as a work bike by the police in many parts of the World, as well as seeing a lot of service in the hands of private owners, both as trans-continent touring and in both road and off-road competition. In road-racing it was used in modified form by Helmut Dahne in Europe and Reg Pridmore in the USA. Helmut Dahne's bike although having a re-worked motor had a surprising standard frame. In 1974 using a very special R90S motor in his R75/5 frame Helmut Dahne came second in the production T.T. at the Isle of Man.

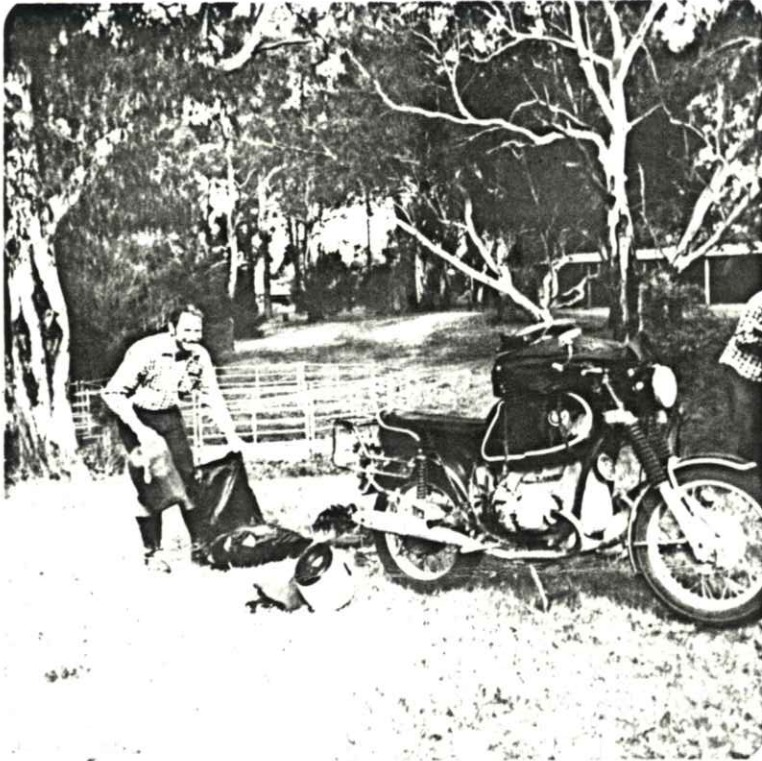
Reg Pridmore's bike was a very special machine developed by the USA BMW importers, Butler and Smith. It was fitted with a Rob North frame which helped to keep the weight down to 141 kg. The motor was re-worked to increase power and lose weight and with short connecting rods and special pistons that permitted the barrels to be shortened, so width of the motor was shortened by 28 mm.

Built for the U.S. Formula 750 races it put out 90 bhp and was capable of speeds around 270 km/h, it was soon over-run by the big development on the Japanese two-strokes.

Helbert Scheer riding in the 1970 ISDT collected a silver medal on his modified R75/5. In 1973 a chain of R75/5s were ridden around the Isle of Man T.T. circuit for seven days for a total of 26,696.88 kms at an average speed of 80 km/h.

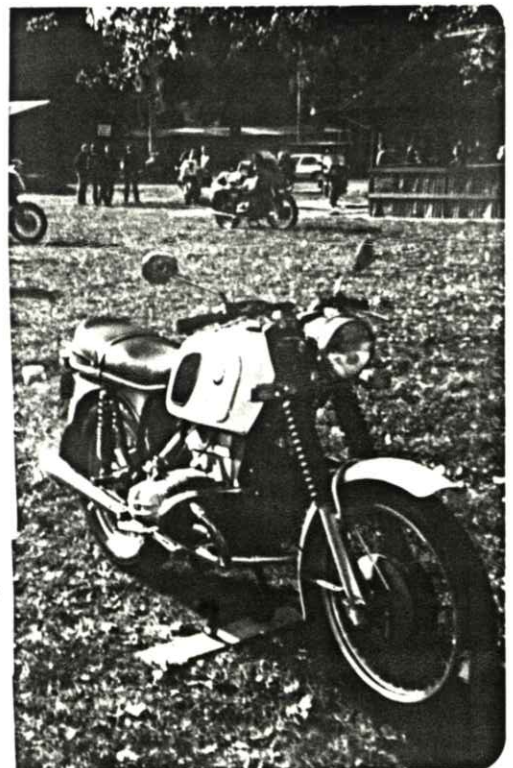
But its biggest success was with Tony Hatton who came third in the Castrol Six Hour in 1973, racing against a Kawasaki 900.

FRANK



← One of our Club members
with his R75/5

Another R75/5 →



CHRISTMAS "WISHLIST" FOR MOTORCYCLISTS

Items listed below available from Weston Motorcycles.
Approx. costs only, full price details available at the shop.
UP TO \$30

TROUBLE LIGHT - 'for night time emergencies.'

BMW FIRST AID KIT - 'A must for touring/ holidays.'

BMW RAIN GLOVES - 'Ideal wet weather protection.'

BMW SILK INNER GLOVES - 'for that extra bit of warmth for your hands.'

BMW CABLE LOCK - 'fits into top frame tube under the petrol tank -
keeps your prized bike where you left it.'

A range of BMW motorcycle care products are available, items include,
ALLOY RIM CLEANER, ENGINE DEGREASER, TAR REMOVER, SHAMPOO (?),
POLISH & WAX - keep your BMW looking like new !!!!!

UP TO \$70

VARIETY OF BMW 'TOURING GLOVES'

BMW KIDNEY BELTS

BOOK - BMW, A MOTORCYCLE HISTORY - good info on all the previous BMs.

BMW WIND JACKET or PULLOVER

UP TO \$130

BMW SUPER TOOL KIT - a must for the serious long distance tourer/
home maintenance enthusiast.

BMW HEATED HANDBAR GRIPS for 'K' series

OTHER ITEMS YOU MAY LIKE TO CONSIDER

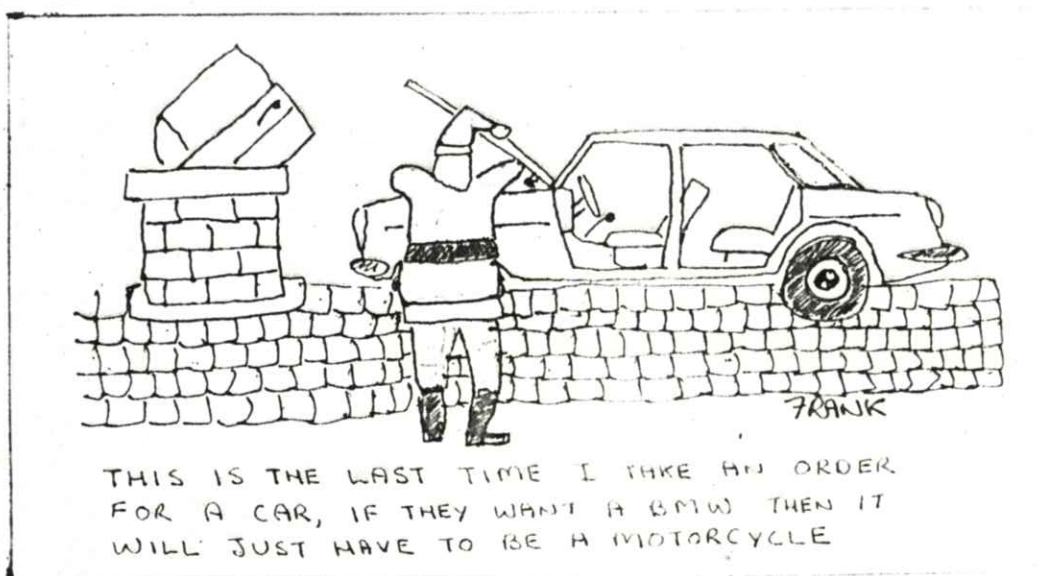
BMW RAINSUIT - keep dry in any rain with this outfit, blue or orange

SHEEPSKIN SEAT COVERS - cool in summer - warm in winter

BMW BEER STIENS - GLASS MUGS

For those on a very limited budget - all under \$10

BMW KEYRINGS, KEY WALLETS & BADGES



ACT BMW MOTOR CYCLE CLUB

CONSTITUTION

CONTENTS

1. NAME
2. OBJECTIVES
3. POWER
4. MEMBERSHIP
5. MEMBERSHIP FEES
6. AFFILIATION
7. MEETINGS
8. QUORUM
9. COMMITTEE
10. DUTIES OF THE COMMITTEE
11. ELECTIONS
12. VOTING
13. MOTIONS
14. INCOME AND PROPERTY OF THE CLUB
15. ACCOUNTS AND AUDIT
16. AMENDMENTS TO THE CONSTITUTION
17. LIMITATION OF LIABILITY
18. DISCIPLINE
19. SEAL
20. DISSOLUTION

11 NOVEMBER 1985

ACT BMW MOTOR CYCLE CLUB

CONSTITUTION

1. NAME

THE NAME OF THE CLUB SHALL BE THE "ACT BMW MOTOR CYCLE CLUB", HEREINAFTER REFERRED AS TO "THE CLUB", AND MAY HAVE THE SHORT TITLE OF THE "ACT BMW MCC".

2. OBJECTIVES

THE OBJECTIVES OF THE CLUB ARE TO :

- (a) PROMOTE MOTOR CYCLE ACTIVITIES AND SOCIAL OUTINGS TO ADVANCE FRIENDSHIP WITHIN THE MOTOR CYCLE FRATERNITY;
- (b) SHARE INFORMATION AND SKILLS RELATING TO BMW MOTOR CYCLES AMONGST THE MEMBERS ;

3. POWER

THE CLUB SHALL HAVE THE POWER TO DO ALL SUCH THINGS AS ARE NECESSARY, EXPEDIENT OR INCIDENTAL TO THE ATTAINMENT OF ALL THE ABOVE OBJECTIVES.

4. MEMBERSHIP

(a) MEMBERSHIP OF THE CLUB SHALL CONSIST OF TWO CLASSES :

- (i) FULL MEMBERSHIP FOR BMW MOTOR CYCLE OWNERS AND PARTNERS, AND
 - (ii) ASSOCIATE MEMBERSHIP FOR NON BMW MOTOR CYCLE OWNERS ;
- (b) EACH CLASS OF MEMBERSHIP MAY BE SINGLE OR JOINT MEMBER STATUS WHERE A PARTNERSHIP EXISTS.
- (c) THE COMMITTEE MAY REFUSE AN APPLICATION FOR MEMBERSHIP.
- (d) THE ASSOCIATE MEMBERSHIP SHALL NOT EXCEED ONE QUARTER OF THE TOTAL MEMBERSHIP.

5. MEMBERSHIP FEES

- (a) THE ANNUAL FEES FOR ALL MEMBERS SHALL BE PAYABLE ON JOINING AND THEREAFTER BY THE ANNUAL GENERAL MEETING.
- (b) THE FEE FOR NEW MEMBERSHIP SHALL BE THE SAME AS FOR RENEWALS EXCEPT THAT FOR NEW MEMBERSHIP RECEIVED FROM THE OCTOBER GENERAL MEETING ONLY FIFTY PERCENT OF THE RATE SHALL APPLY.
- (c) THE COMMITTEE MAY DETERMINE THAT THE ANNUAL MEMBERSHIP FEES BE CHANGED AND THE DECISION SHALL TAKE EFFECT UPON RATIFICATION BY A MONTHLY GENERAL MEETING.

6. AFFILIATION

THE CLUB MAY FORM AN AFFILIATE RELATIONSHIP WITH OTHER ASSOCIATIONS WHICH HAVE SIMILAR OBJECTIVES.

7. MEETINGS

- (a) A GENERAL MEETING SHALL BE HELD EACH MONTH AND THE ANNUAL GENERAL MEETING SHALL TAKE THE PLACE OF THE MARCH GENERAL MEETING.
- (b) AT LEAST FOURTEEN DAYS NOTICE FOR AN ANNUAL GENERAL MEETING AND ANY EXTRAORDINARY MEETING AND AT LEAST SEVEN DAYS NOTICE FOR AN ORDINARY GENERAL MEETING SHALL BE GIVEN TO ALL MEMBERS.
- (c) AN EXTRAORDINARY MEETING MAY BE PART OF A GENERAL MEETING.

8. QUORUM

A QUORUM FOR AN ORDINARY GENERAL MEETING SHALL BE FIFTEEN PERCENT OF THE TOTAL MEMBERSHIP AND FOR AN ANNUAL GENERAL MEETING SHALL BE TWENTY FIVE PERCENT OF THE TOTAL MEMBERSHIP.

9. COMMITTEE

- (a) A COMMITTEE SHALL BE ELECTED AT EACH ANNUAL GENERAL MEETING.
- (b) THE COMMITTEE SHALL COMPROMISE :
 - (i) A PRESIDENT;
 - (ii) A SECRETARY;
 - (iii) A TREASURER; AND
 - (iv) UP TO A MAXIMUM OF FOUR ADDITIONAL COMMITTEE PERSONS FROM CLAUSE 10(c), (f), (g), (h).
- (c) TO BE ELIGIBLE FOR OFFICE A MEMBER SHALL BE :
 - (i) A BMW MOTOR CYCLE OWNER; AND
 - (ii) A FULL FINANCIAL MEMBER FOR AT LEAST SIX MONTHS.
- (d) A COMMITTEE MEMBER SHALL HOLD OFFICE UNTIL THE NEXT ANNUAL GENERAL MEETING, UNTIL HE OR SHE RESIGNS OR IS REMOVED FROM OFFICE BY A RESOLUTION OF THE CLUB AT AN EXTRAORDINARY MEETING.
- (e) IN THE EVENT OF A CASUAL VACANCY ARISING THAT VACANCY MAY REMAIN OR BE FILLED FOLLOWING PRIOR NOTICE FOR THE UNEXPIRED PERIOD UP TO THE NEXT ANNUAL GENERAL MEETING AND IN ACCORDANCE WITH THE ELECTIONS AND VOTING PROVISIONS AS IF IT WERE A NORMAL ELECTION.

10. DUTIES OF THE COMMITTEE

- (a) THE COMMITTEE SHALL RESPONSIBLY MANAGE THE BUSINESS OF THE CLUB IN ACCORDANCE WITH THIS CONSTITUTION.
- (b) THE PRESIDENT SHALL BE THE SPOKESPERSON FOR THE CLUB.
- (c) THE VICE PRESIDENT SHALL ASSIST AND DEPUTISE FOR THE PRESIDENT WHERE REQUIRED.
- (d) THE SECRETARY SHALL ATTEND TO CORRESPONDENCE AND KEEP MINUTES AS REQUIRED.
- (e) THE TREASURER SHALL MAINTAIN A CORRECT RECORD OF THE FINANCIAL TRANSACTIONS OF THE CLUB. PROVIDE FINANCIAL REPORTS AS REQUESTED AND MAKE AVAILABLE AN AUDITED FINANCIAL STATEMENT FOR THE PREVIOUS YEAR AT THE ANNUAL GENERAL MEETING.
- (f) THE RALLY CO-ORDINATOR SHALL BE RESPONSIBLE FOR ARRANGING MONTHLY RUNS AND CO-ORDINATING ANY RALLY INFORMATION.
- (g) THE SOCIAL SECRETARY SHALL ARRANGE FOR APPROPRIATE GATHERINGS WHICH ARE OTHER THAN DAY RUNS OR GENERAL MEETINGS.
- (h) THE EDITOR SHALL CO-ORDINATE MATERIAL FOR PUBLICATION OF THE CLUB JOURNAL ON A REGULAR BASIS OR AS IS POSSIBLE.
- (i) AN INDEPENDANT AUDIT OF THE CLUB'S FINANCIAL TRANSACTIONS SHALL BE CAUSED TO BE MADE AT LEAST ONCE EACH TWELVE MONTHS BY A QUALIFIED PERSON WHO SHALL NOT BE A MEMBER OR THE PUBLIC OFFICER.
- (j) THE COMMITTEE SHALL APPOINT A PUBLIC OFFICER IN ACCORDANCE WITH THE REQUIREMENTS OF THE ASSOCIATIONS INCORPORATION ORDINANCE 1953 AS AMENDED.

11. ELECTIONS

- (a) EACH NOMINEE FOR ELECTION TO THE COMMITTEE SHALL BE PROPOSED AND SECONDED BY MEMBERS AS FOLLOWS
 - (i) WRITTEN NOMINATIONS MAY BE PROVIDED TO THE ANNUAL GENERAL MEETING WITH SIGNATURES OF THE NOMINEE, PROPOSER AND SECONDER; OR
 - (ii) ORAL NOMINATIONS MAY BE MADE AT THE ANNUAL GENERAL MEETING WHERE IT SHALL ALSO BE NECESSARY FOR THE NOMINEE PROPOSER AND SECONDER TO BE PRESENT.
- (b) THE MEMBERS PRESENT AT THE ANNUAL GENERAL MEETING SHALL ELECT A RETURNING OFFICER FROM AMONGST THOSE PERSONS PRESENT AT THE MEETING TO CONDUCT BALLOTS FOR POSITIONS ON THE COMMITTEE. THE RETURNING OFFICER SHALL NOT BE A NOMINEE FOR ANY POSITION ON THE COMMITTEE FOR WHICH A BALLOT IS TO BE CONDUCTED.

12. VOTING

- (a) VOTING FOR COMMITTEE POSITIONS SHALL BE BY SECRET BALLOT.
- (b) VOTING ON BUSINESS OTHER THAN COMMITTEE ELECTIONS SHALL BE BY SHOW OF HANDS UNLESS A MOTION IS SUPPORTED THAT A SECRET BALLOT BE TAKEN.
- (c) VOTING BY PROXY MAY ONLY BE ACCEPTED AT AN ANNUAL GENERAL MEETING OR EXTRAORDINARY MEETING AND MUST BE IN WRITING.
- (d) VOTING ON A MOTION SHALL BE SUCCESSFUL IF:
 - (i) FOR CONSTITUTIONAL AMENDMENTS A TWO THIRDS MAJORITY VOTE IS ACHIEVED; OR
 - (ii) FOR ALL OTHER MOTIONS A SIMPLE MAJORITY OF FIFTY PERCENT PLUS ONE VOTE IS ACHIEVED.
- (e) WHERE AN EQUAL VOTE ON A MOTION RESULTS THE MATTER SHALL BE RESOLVED AS REMAINING AS IT WAS BEFORE THE MOTION.

13. MOTIONS

- (a) MOTIONS MUST BE FORMALLY PROPOSED AND SECONDED BEFORE BEING PUT TO THE VOTE.
- (b) WHERE AN AMENDMENT TO THE CONSTITUTION IS PROPOSED THE MOTION SHALL BE FIRST PUBLISHED AND THEN VOTED UPON AT AN EXTRAORDINARY MEETING.
- (c) ON MATTERS OTHER AN AMENDMENTS TO THE CONSTITUTION THE VOTE MAY BE TAKEN AT ANY TIME.

14. INCOME AND PROPERTY OF THE CLUB

- (a) THE INCOME AND PROPERTY OF THE CLUB, HOWEVER DERIVED, SHALL BE APPLIED SOLELY TOWARDS THE PROMOTION OF THE OBJECTIVES AND PURPOSES OF THE CLUB AND NO PORTION THEREOF SHALL BE PAID OR TRANSFERRED, DIRECTLY OR INDIRECTLY, IN MONEY, PROPERTY OR OTHERWISE TO ANY MEMBER OF THE CLUB.
- (b) NOTHING IN THE FOREGOING PROVISION OF THIS CLAUSE PREVENTS THE PAYMENT IN GOOD FAITH TO A MEMBER OF THE CLUB FOR:
 - (i) REMUNERATION IN RETURN FOR SERVICES ACTUALLY RENDERED TO THE CLUB OR FOR GOODS SUPPLIED TO THE CLUB BY A MEMBER IN THE ORDINARY COURSE OF BUSINESS;
 - (ii) A REASONABLE AND PROPER SUM BY WAY OF RENT FOR PREMISES LET TO THE CLUB BY A MEMBER OR A MEMBER OF THE COMMITTEE OF THE CLUB; OR
 - (iii) ANY PROPER OUT-OF-POCKET EXPENSES INCURRED BY A MEMBER.

15. ACCOUNTS AND AUDIT

- (a) THE CLUB SHALL MAINTAIN AN ACCOUNT (HEREINAFTER REFERRED TO AS "THE ACCOUNT" WITH A BANK OR OTHER FINANCIAL INSTITUTION APPROVED BY THE COMMITTEE.
- (b) A RECEIPT SHALL BE ISSUED FOR ALL MONEYS RECEIVED ON BEHALF OF THE CLUB, ALL MONEYS RECEIVED SHALL BE PAID INTO THE ACCOUNT AS SOON AS PRACTICABLE.
- (c) ALL PAYMENTS FROM CLUB FUNDS SHALL BE BY CHEQUE AND SHALL BE SUBJECT TO PRIOR APPROVAL IN EACH INSTANCE BY THE COMMITTEE. SIGNING AUTHORITIES FOR THE CHEQUES SHALL BE ANY TWO OF THREE AUTHORISED COMMITTEE MEMBERS.

16. AMENDMENTS TO THE CONSTITUTION

- (a) AT LEAST FOURTEEN DAYS NOTICE OF ANY PROPOSED AMENDMENT TO THIS CONSTITUTION SHALL BE GIVEN TO ALL MEMBERS.
- (b) AN AMENDMENT TO THIS CONSTITUTION SHALL HAVE NO EFFECT WITHOUT COMPLIANCE WITH THE REQUIREMENTS OF SECTION 13 OF THE ASSOCIATIONS INCORPORATION ORDINANCE 1953 AS AMENDED.

17. LIMITATION OF LIABILITY

IN THE EVENT OF ANY CLAIM BEING MADE UPON THE CLUB, THE CLUB'S LIABILITY SHALL BE LIMITED TO THE EXTENT OF FUNDS AND OTHER ASSETS HELD BY THE CLUB. IN RESPECT OF ANY SUCH CLAIM, THE CLUB SHALL NOT REQUIRE THE PAYMENT BY ANY MEMBER OF ANY FEE OR LEVY.

18. DISCIPLINE

- (a) A MEMBER MAY DIRECT THE COMMITTEE TO ENQUIRE INTO A BREACH OF THE CONSTITUTION BY ANOTHER MEMBER AND WHERE APPROPRIATE CONSIDER ANY SERIOUS BREACH WITH MEMBERSHIP TERMINATION.
- (b) WHERE A COMMITTEE MEMBER FAILS HIS OR HER RESPONSIBILITIES UNDER THE CONSTITUTION A MEMBER MAY PROPOSE AT A GENERAL MEETING THAT THE COMMITTEE MEMBER BE REMOVED FROM OFFICE THEREBY CREATING A CASUAL VACANCY.

19. SEAL

- (a) THE SEAL OF THE CLUB SHALL BE IN THE FORM OF A RUBBER STAMP INSCRIBED WITH THE NAME OF THE CLUB ENCIRCLING THE WORD "SEAL".
- (b) THE SEAL SHALL NOT BE AFFIXED TO ANY INSTRUMENT EXCEPT BY THE AUTHORITY OF THE COMMITTEE AND THE AFFIXING THEREOF SHALL BE ATTESTED BY THE SIGNATURES OF TWO MEMBERS OF THAT COMMITTEE, AND THAT ATTESTATION IS SUFFICIENT FOR ALL PURPOSES THAT THE SEAL WAS AFFIXED BY AUTHORITY OF THAT COMMITTEE.
- (c) THE SEAL SHALL REMAIN IN THE CUSTODY OF THE SECRETARY.

20. DISSOLUTION

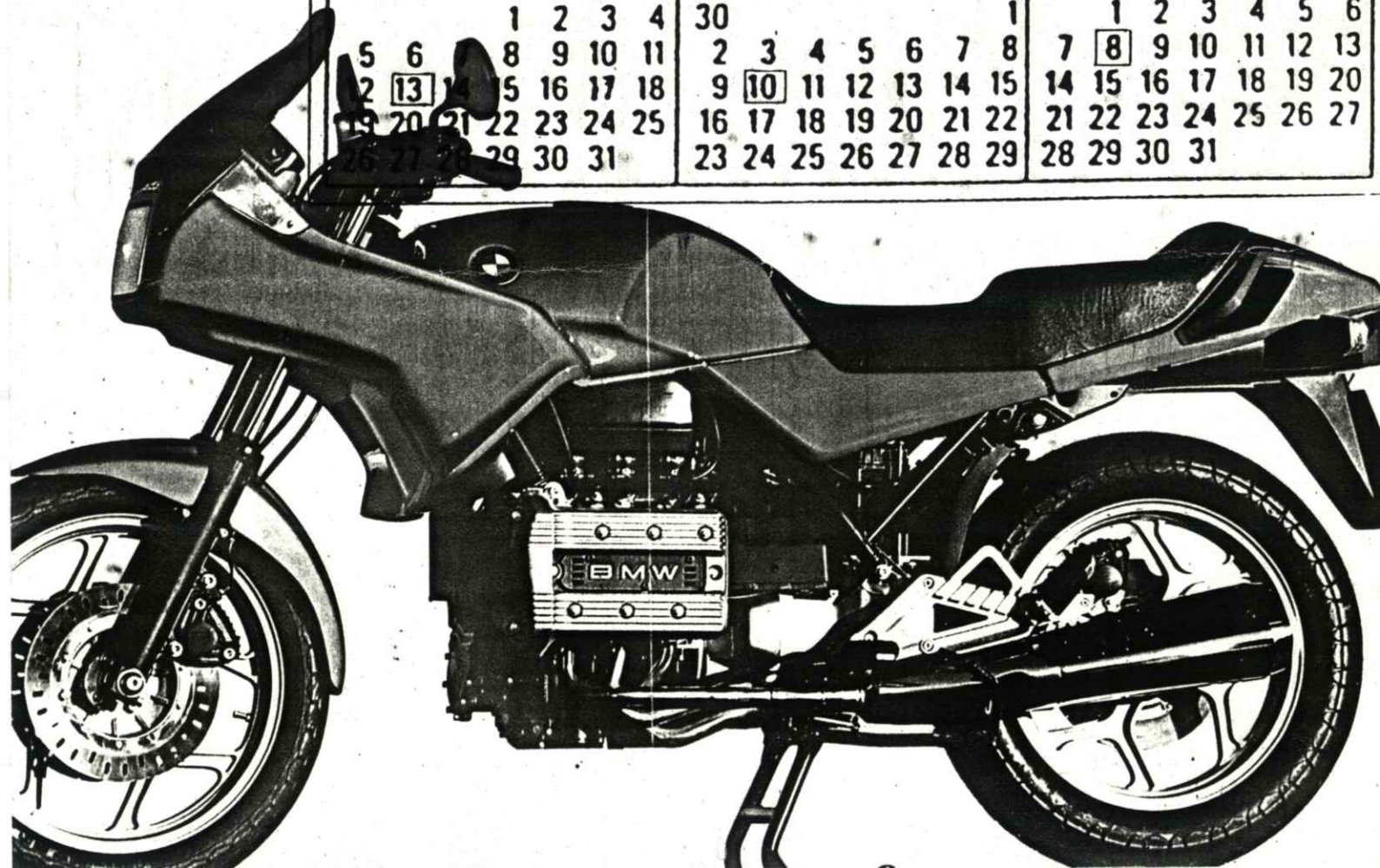
- (a) THE CLUB SHALL BE DISSOLVED IF A RESOLUTION TO THIS EFFECT IS CARRIED BY AT LEAST A TWO-THIRDS MAJORITY OF A QUORUM OF MEMBERS PRESENT AT AN EXTRAORDINARY MEETING CALLED FOR THIS PURPOSE.
 - (b) IN THE EVENT OF THE DISSOLUTION OF THE CLUB, ANY SURPLUS ASSETS SHALL BE TRANSFERRED TO A SUCCEEDING BODY, OR TO A BODY WITH SIMILAR OBJECTIVES TO THOSE SET OUT IN CLAUSE 2 OF THIS CONSTITUTION.
 - (c) THE ASSETS OF THE CLUB SHALL NOT BE DISTRIBUTED AMONGST THE MEMBERS IN THE EVENT OF A DISSOLUTION OF THE CLUB OR UNDER ANY OTHER CIRCUMSTANCES.
-

CALENDAR 1986



ACT BMW MCC
GENERAL MEETINGS

JANUARY							FEBRUARY							MARCH							
S	M	T	W	T	F	S	S	M	T	W	T	F	S	S	M	T	W	T	F	S	
			1	2	3	4							1	30	31						1
5	6	7	8	9	10	11	2	3	4	5	6	7	8	2	3	4	5	6	7	8	
12	13	14	15	16	17	18	9	10	11	12	13	14	15	9	10	11	12	13	14	15	
19	20	21	22	23	24	25	16	17	18	19	20	21	22	16	17	18	19	20	21	22	
26	27	28	29	30	31		23	24	25	26	27	28		23	24	25	26	27	28	29	
APRIL							MAY							JUNE							
S	M	T	W	T	F	S	S	M	T	W	T	F	S	S	M	T	W	T	F	S	
			1	2	3	4	5					1	2	3	1	2	3	4	5	6	7
6	7	8	9	10	11	12	4	5	6	7	8	9	10	8	9	10	11	12	13	14	
13	14	15	16	17	18	19	11	12	13	14	15	16	17	15	16	17	18	19	20	21	
20	21	22	23	24	25	26	18	19	20	21	22	23	24	22	23	24	25	26	27	28	
27	28	29	30				25	26	27	28	29	30	31	29	30						
JULY							AUGUST							SEPTEMBER							
S	M	T	W	T	F	S	S	M	T	W	T	F	S	S	M	T	W	T	F	S	
			1	2	3	4	5	31					1	2		1	2	3	4	5	6
6	7	8	9	10	11	12	3	4	5	6	7	8	9	7	8	9	10	11	12	13	
13	14	15	16	17	18	19	10	11	12	13	14	15	16	14	15	16	17	18	19	20	
20	21	22	23	24	25	26	17	18	19	20	21	22	23	21	22	23	24	25	26	27	
27	28	29	30	31			24	25	26	27	28	29	30	28	29	30					
OCTOBER							NOVEMBER							DECEMBER							
S	M	T	W	T	F	S	S	M	T	W	T	F	S	S	M	T	W	T	F	S	
			1	2	3	4	30						1		1	2	3	4	5	6	
5	6	7	8	9	10	11	2	3	4	5	6	7	8	7	8	9	10	11	12	13	
12	13	14	15	16	17	18	9	10	11	12	13	14	15	14	15	16	17	18	19	20	
19	20	21	22	23	24	25	16	17	18	19	20	21	22	21	22	23	24	25	26	27	
26	27	28	29	30	31		23	24	25	26	27	28	29	28	29	30	31				



A.C.T. BMW M.C.C.
P.O. Box 1042
Woden A.C.T. 2606

LIBRARY
COPY